



# THE MAMBA MOUNT

UNIVERSAL CONSOLE SIDE MOUNT - WITH A-MOD DESKTOP

Specification Sheet

425-0150/4138

- 12" Motion Arm
- Tilt/Swivel
- Smart Zone Design
  - Store & Drive
  - Park & Work
  - Tactically Safe



## BUILT TO FIT

### Chevy Tahoe

- 425-6569 Contour Console (2021+)
- 425-6678 IPB Contour Console (2021+)
- 425-6268 Contour Console (15-20)
- 425-6621 IPB Contour Console (15-20)

### Dodge Charger Pursuit

- 425-6636 Contour Console (2011+)
- 425-6485 IPB Contour Console (2016+)

### Dodge Durango Pursuit

- 425-6680 Contour Console (2021+)

### Ford PI Utility

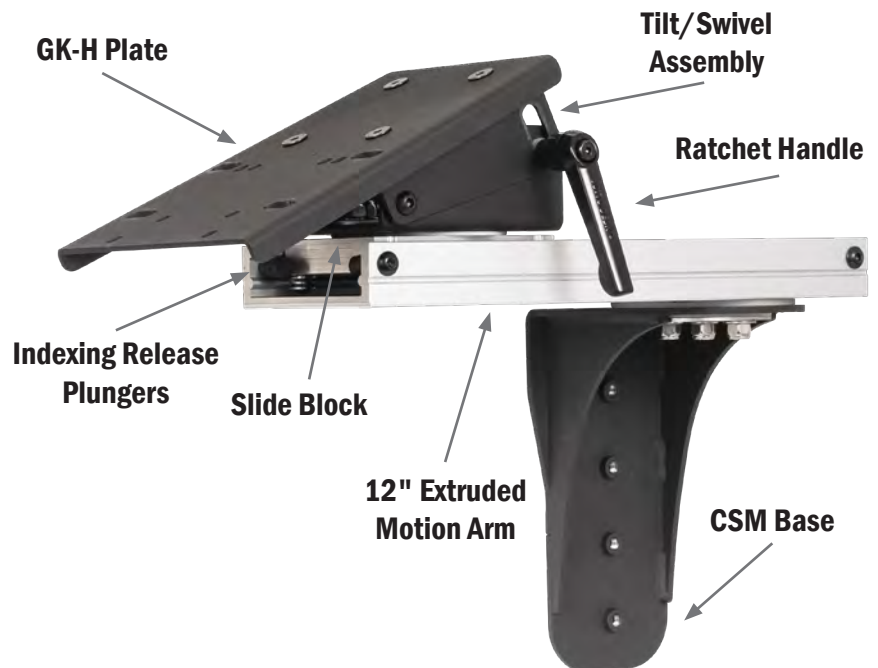
- 425-6505 Contour Console (2020+)
- 425-6508 IPB Contour Console (2020+)
- 425-6512 Max Depth Contour Console (2020+)

### Ford F-150 PPV

- 425-6524 Contour Console (2021+)
- 425-6500 Contour Console (18-20)

### Universal

- 425-6445 20" Wide Body Console
- 425-6554 20" Wide Body IPB Console





# THE MAMBA MOUNT

## UNIVERSAL CONSOLE SIDE MOUNT - WITH A-MOD DESKTOP

### Ordering Options

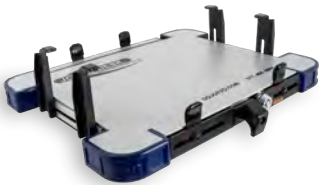
#### 425-0150

MAMBA MOUNT  
(BASE ONLY)



#### 425-0150/4138

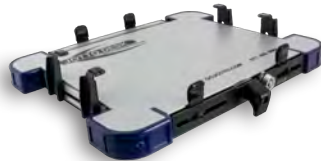
MAMBA MOUNT WITH A-MOD  
(TALL CLAMPS)



Width.....11.25" to 13.625"  
Depth .....9.25" to 11" (with extensions)  
Clamp Height.....1" to 2.25" (Tall Clamp)  
Weight: .....4.65 lbs. (5.65 lbs with GK Plate)

#### 425-0150/4152

MAMBA MOUNT WITH A-MOD  
(SHORT CLAMPS)



Width.....11.25" to 13.625"  
Depth .....9.25" to 11" (with extensions)  
Clamp Height.....0.5" to 1.10" (Short Clamp)  
Weight: .....4.65 lbs (5.65 lbs with GK Plate)

#### 425-0150/4139

MAMBA MOUNT WITH A-MOD XL  
(SHORT CLAMPS)



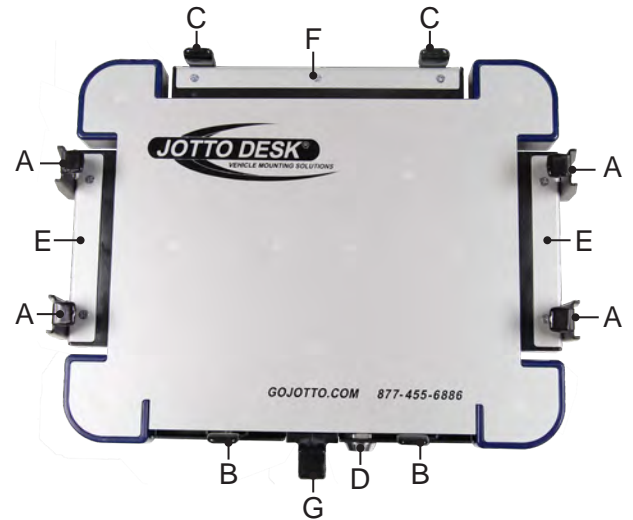
Width.....13.5" to 16"  
Depth .....9.25" to 11" (with extensions)  
Clamp Height.....0.5" to 1.10" (Short Clamp)  
Weight: .....5.1 lbs (6.1lbs with GK Plate)

#### 425-0150/4154

MAMBA MOUNT WITH A-MOD XL  
(TALL CLAMPS)



Width.....13.5" to 16"  
Depth .....9.25" to 11" (with extensions)  
Clamp Height.....1" to 2.25" (Tall Clamp)  
Weight: .....5.1 lbs (6.1lbs with GK Plate)



The A-MOD is engineered to be lightweight, yet rugged. Manufactured from steel, high strength aluminum, and composite materials where it makes sense. It's not real security if a laptop can be simply be stolen by jimmying the lock or bending the clamps. The A-MOD features a high-security solid brass tubular lock and case-hardened steel clamps.

#### A-MOD DESKTOP (450-4138)

- A. Side Clamps, Short or Tall (Case Hardened Steel)
- B. Front Tabs (Case Hardened Steel)
- C. Rear Tabs and Offset Rear Tabs (Case Hardened Steel)
- D. Tubular Lock - Solid Brass/High Security
- E. Side Trays
- F. Rear Tray
- G. Latch Release Handle



209 W. EASY ST., ROGERS, AR 72756 • JOTTOPUBLICSAFETY.COM • 6/24

Jotto Desk™ is a patented product and Registered Trademark of Assembled Products™ Corporation.  
Specifications subject to change without notice.

