

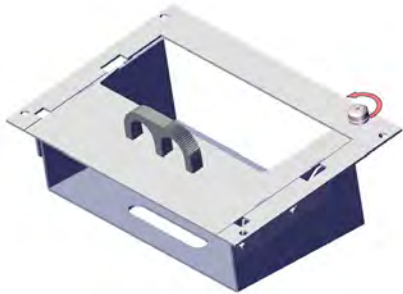


ZEBRA I4CC

FACEPLATE

Installation Instructions

425-6543



Turn knob to tighten and secure the two faceplate pieces together.



Slide Printer into the faceplate beginning at the taller/wider opening.



Flip the faceplate and printer over and tighten two small screws on the bottom of the printer/faceplate to secure the printer.

If you have questions or need further assistance please call Technical Support: 1.877.455.6886



209 W. EASY ST., ROGERS, AR 72756 • JOTTOPUBLICSAFETY.COM • 2/25

Jotto Desk™ is a patented product and Registered Trademark of Assembled Products™ Corporation.
Specifications subject to change without notice.

050-0185-00

