

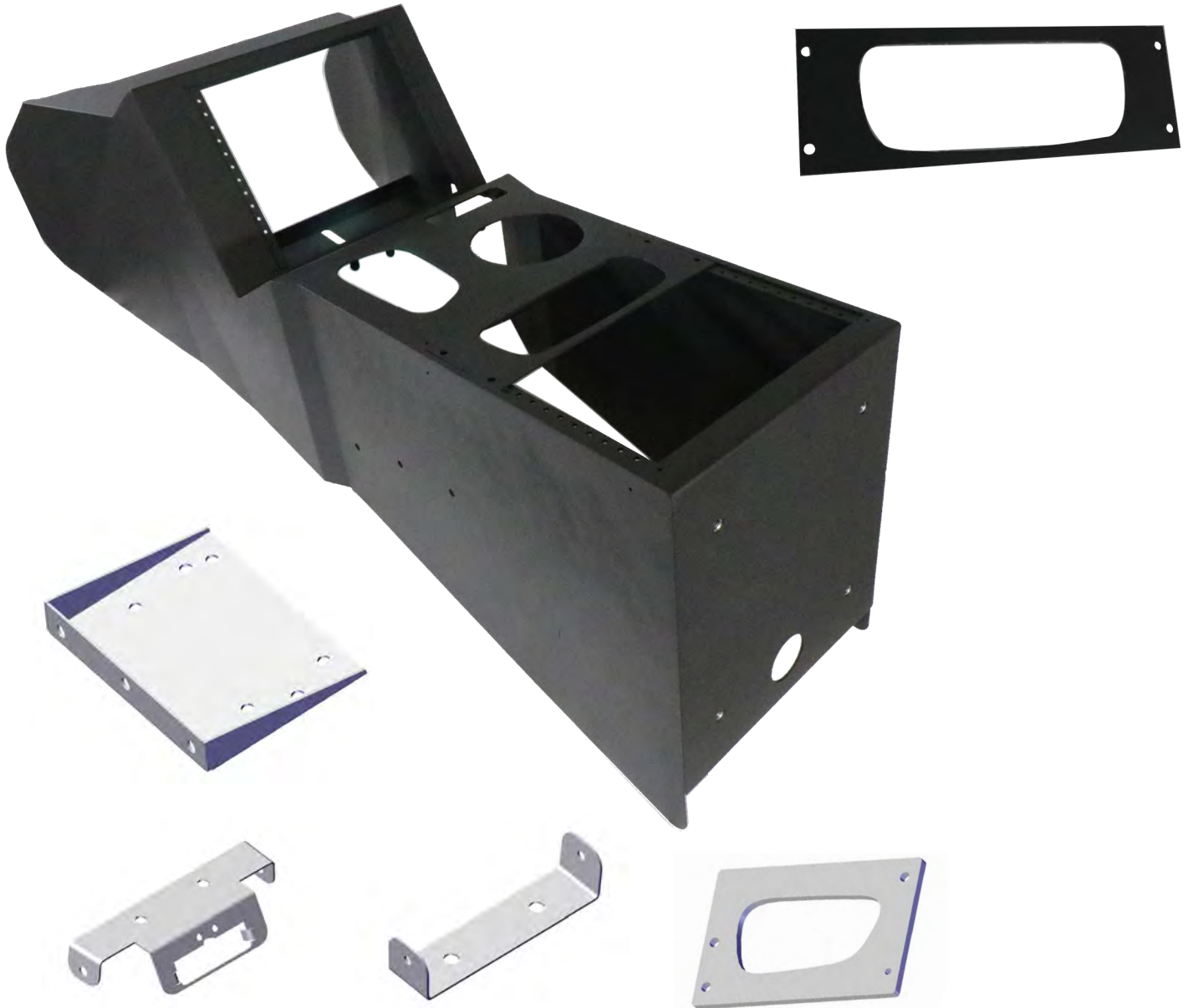


# CONTOUR CONSOLE

2019-2020 DODGE DURANGO

Installation Instructions

425-6655



Pop up shifter boot. Unscrew bolt on shifter with T20 bit and unplug wire cord.



Pry up top/center OEM console. Disconnect all wires from top cover.



Pry up manual neutral cover located under armrest near the hinge.



Pop off front left/right side panels from OEM console.



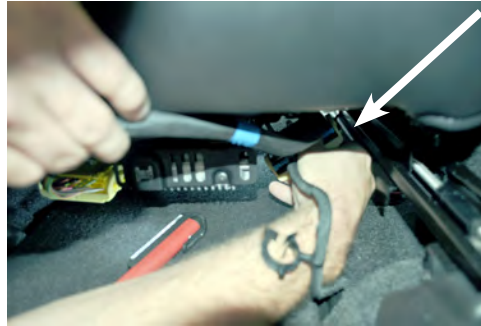
Remove (2) 10mm bolts and (2) 7mm bolts.



Disconnect wiring harnesses and harness clips.



Move seats forward, use a flat head screw driver to expose and then remove (2) 10mm bolts.



Disconnect wire harness under P/S seat by unlocking the lever, and pulling wire connector apart.



On the driver side of center console, unsnap Manual Park Release cable from OEM substructure.



Remove OEM console from vehicle.



With OEM console out of vehicle, begin to remove all components from console. First, remove media wire harness.



Using a T20 bit, remove (4) screws and set aside media component to remount into Contour Console.

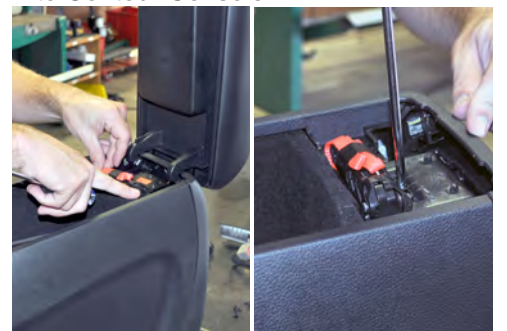


Traction switch/coin tray will pop out from underside of OEM console. Set aside.

**Note: Some vehicles may have a coin tray only without Traction Switch.**



Now pry rear OEM cover from console.



To remove Manual Park Release, you will need to remove (3) Phillips screws and set arm rest aside. Then remove (2) Phillips screws that are exposed.

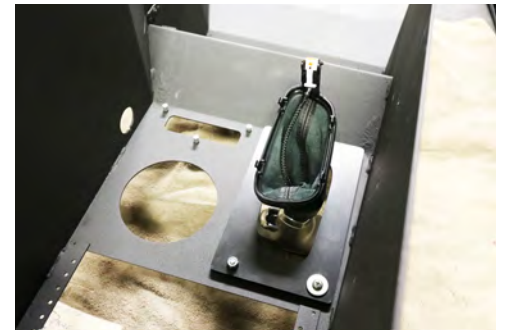
**Note: See owner's manual section "What To Do In Emergencies" for more Park Release information.**



Remove Duct. Using a flat head screwdriver, pop out clips holding cable in place. Then pull cable through, and remove cable clips. Set aside Manual Park Release to be reinstalled into the Contour Console.



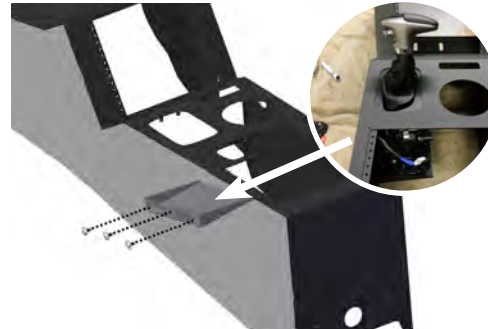
Now, with all components out of OEM console, remove any remaining wiring and 12V outlet from inside storage box. Set aside OEM console substructure.



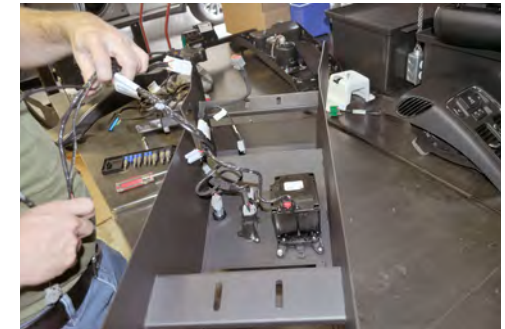
With the console turned over, install the boot and shifter and re-tighten T-20 screws. Snap the boot clips into the Filler Plate.



Secure shifter to Mount Plate with factory OEM bolts.



Install shifter/mounting plate assembly to inside of console and into boot. Secure assembly to console with provided (3) socket head cap screws and reconnect wire cord.



Reinstall components back into Jotto Desk Contour Console using the same hardware from OEM console.



Using 5/16" hex head bolts, attach Manual Park Release to Forward Mount Bracket.



Attach Forward Mount Bracket into vehicle reusing (2) 10mm bolts. Once installed, route/connect Manual Park Release cable making sure that wire will not be pinched by Jotto Desk Contour Console. **Note:** See owner's manual section "What To Do In Emergencies" for more Park Release information.



Attach Rear Mount Bracket with OEM (2) 10mm bolts.



Install foam insert into open duct.



Install Jotto Desk Contour Console using 5/16 button head cap screws.

**Note: The Manual Park Release is accessible through side access panel.**



Reroute all OEM wires and reconnect.



Traction switch/coin tray will install into faceplate opening.

**Note: Some vehicles may have a coin tray only. Without Traction Switch.**

If you have questions or need further assistance please call Technical Support: 1.877.455.6886



**209 W. EASY ST., ROGERS, AR 72756 • JOTTOPUBLICSAFETY.COM • 2/25**

Jotto Desk™ is a patented product and Registered Trademark of Assembled Products™ Corporation.  
Specifications subject to change without notice.

050-0166-00

