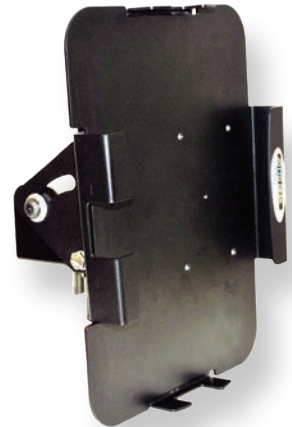
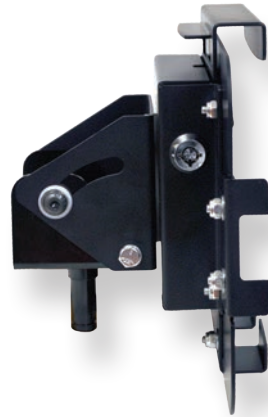


iPad MOUNTING STATION

**DESIGNED TO FIT iPad 1 / iPad 2 / iPad 3
/ iPad Air AND WORKS WITH EXISTING
JOTTO DESK MOUNTS!**



*** Adjustable to fit tablets from 7.5 - 8.3" x 9.84 - 12.5" and 0.84" deep**



**QUICK
RELEASE
HANDLE**

**SNUG FIT FOR
YOUR TABLET**



landscape

portrait



**LOCK AND
SECURE IN
PLACE**

HOW TO ORDER:

- A. If currently using a Jotto Desk Laptop Mount and are transitioning to a Tablet, simply order 450-4131.**
- B. Call and ask to speak with your Sales Manager.**

* We require use of a protective case to further secure tablet and prevent vibration against metal parts.

For more information, visit us online @ www.JottoDesk.com