



# SINGLE CELL

2019+ DODGE CHARGER

**Installation Instructions**

475-0184



ABS Bio-Seat



ABS Floor Pan



Seatbelt Extensions



Side Seatbelt Grommets



(2) Black Rubber Floor Pan Drain Plugs



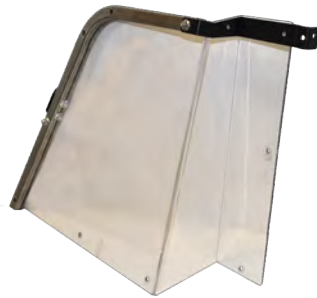
314 Bracket



Poly Stiffener Tube



Upper Poly Center Divider



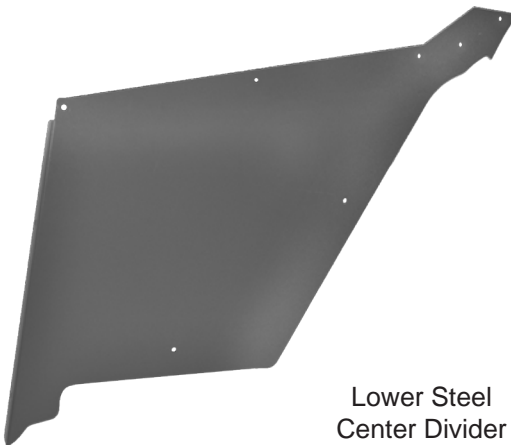
Upper Poly Front Divider



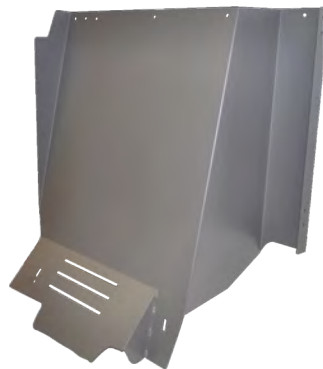
Headliner Handle Bracket



B Pillar Strap



Lower Steel Center Divider



Steel Front Divider



Backbone



Outer Mounting Foot Bracket



Upper Poly Wing

## INSTALL SEAT & FLOOR PAN BEFORE SINGLE CELL

1. Lift the front edge of the seat cushion up and pull out of the vehicle. Unbolt the hardware at the bottom of the seatback and use a small flat tool to unlatch the clips from the left and right side that hold the top of the seatback (Pic 1a & 1b). Remove the Seat Belt receivers from the vehicle.

***Locate any aftermarket wiring and be certain that you will not be putting any screws through it.***

### INSTALL FLOOR PAN FIRST

2. Remove the rear seat bolts from both driver and passenger seats. (Pic 2) Remove the plastic trim around the bottom of the back doors and loosen the lower B pillar trim.
3. Place the ABS floor pan in the back seat area putting it under the front seat rails and the B pillar trim. Replace the D/S front seat bolts and the door trim tucking floor pan under trim. (Pic 3)
4. If Planning to utilize drain plugs, use a  $\frac{3}{4}$ " hole saw to drill through the vehicle floor at the drain holes in the ABS floor pan. Install rubber floor pan drain plugs into holes of the ABS Floor Pan.

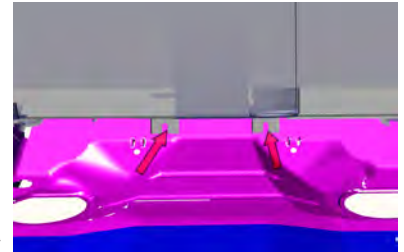
### INSTALL BACK SEAT SECOND

5. Drill holes through dimples in ABS Bio Seat. Attach (3) 314 Brackets to seat by passing the 1/4 - 20 carriage bolts from seat face and secure in place using flange nuts. (Pic 4)

**Make Sure 314 Brackets Are Positioned Properly.  
The 2 carriage bolts will be on D/S of seat. (Pic 5)**

6. Place ABS seat in vehicle. Push the ABS seat to the rear of the vehicle to fit the lower seat shelf snugly.
7. Drill the 1" hex head tek screws (or square drive tek screws with screw cap covers) into the bottom dimples of the ABS seat. (Pic 6) One per side.

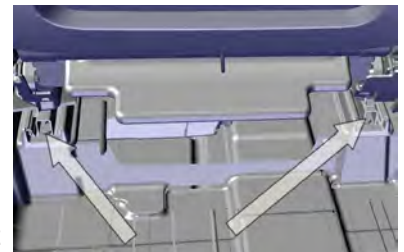
Pic 1a



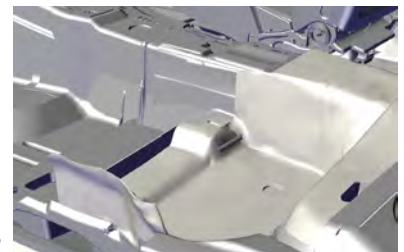
Pic 1b



Pic 2



Pic 3



Pic 4



Pic 5



Pic 6



8. Drill the 1" hex head tek screws (or square drive tek screws with screw cap covers) into the pre-drilled locations on the top of the seat. (Pic 7)

Pic 7



9. Using a long socket extension, secure Seatbelt Extenders (Pic 8) to OEM studs. Re-use OEM nuts. (Pic 9) Secure seat pucks to ABS seat with 3/8 black screws.

Pic 8



**\*All Carriage Bolts Attach From Prisoner Side.  
Nuts and Nut Covers on D/S.**

10. Install Lower Steel Center Divider into P/S of vehicle and butt up against the previously installed 314 Brackets from Step 5. (Pic 10)

Pic 9



11. Remove Front/Rear P/S Door sill/trim. Begin removing B Pillar trim by removing the black screw at the top of the trim with T20 Torx Head Bit. The screw is seen by lifting the headliner (Pic 11). The B Pillar trim can be pulled off once the screw is removed.

Pic 10



12. Remove lower bolt on adjustable seat belt bracket and loosely attach Seat Belt Bracket to B Pillar Strap. With the B Pillar Strap snug, bring the bracket to a horizontal position and mark the B-pillar trim enough so the trim doesn't come in contact. **INSTALL TRIM AND TIGHTEN BOLT FULLY LATER.** (Pic 12)

Pic 11



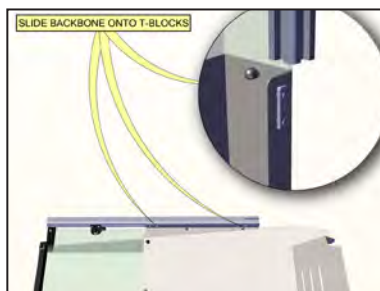
13. The Outer Mounting Foot Brackets should be placed under the P/S rear seat rails. Don't fully tighten bolts. (Note: smallest foot closest to the door and the larger foot next to the transmission hump. (Pic 13)

Pic 12



14. Outside of vehicle, remove protective flim and attach Upper Poly Front Divider to Steel Front Divider with provided 1/4-20 x 3/4 carriage bolts and flange nuts. Loosely attach the T-blocks to the Steel Front Divider with provided 1/4-20 Socket head cap screws. Slide the Backbone down the Steel Front Divider inserting the T-blocks into the slots. (Pic 14)

Pic 14



Pic 13



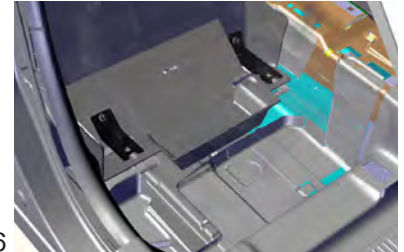


15. Install the now Assembled Front Divider into vehicle through P/S rear door. (Pic 15) Set into position where the Extruded Backbone will wrap around to driver side of Assembled Center Divider.



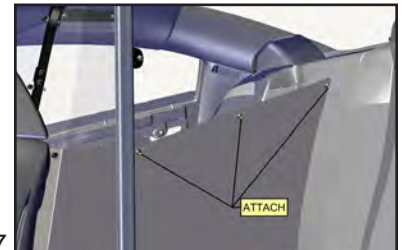
Pic 15

16. Secure Assembled Front Divider to Mounting Foot Brackets and B Pillar Strap using provided 1/4" x 20 x 5/8" carriage bolts and flange nuts through rear seat area. (Pic 16)



Pic 16

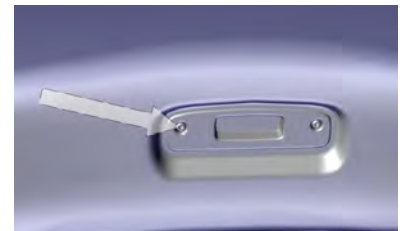
17. Peel the protective film from Upper Poly Center Divider. Attach Poly Stiffener Tube to D/S of Upper Poly Center Divider with provided 1/4-20 x 1.75 carriage bolt and flange nut. Install Upper Poly Center Divider through P/S rear door, attaching to Lower Steel Center Divider with the provided 1/4-20 x 3/4 carriage bolts and flange nuts. (Pic 17)



Pic 17

18. Secure Assembled Front Divider to Assembled Center Divider using 1/4" x 20 x 5/8" carriage bolts and flange nuts on all lower brackets. Use 1/4" x 20 x 1.5" carriage bolt and flange nut top poly section and support tubing.\* (Pic 18) **Tighten All Hardware.**

19. Remove OEM headliner trim piece from P/S using T25 socket. (Pic 19) Attach Headliner Bracket reusing OEM bolts. Secure to Assembled Front Divider using provided M6 bolts and flange nuts.\* (Pic 20)



Pic 18

20. Attach Upper Poly Wing to **FRONT** side of Assembled Front Divider near B Pillar Strap using 1/4 x 20 x 5/8" Carriage bolts and flange nuts in the upper and lower holes of the wing.\* (Pic 21). Replace the B-pillar OEM trim and tighten all hardware.



Pic 19

## INSTALL WINDOW ARMOR AND DOOR PANEL (see attached Install Instructions)

**\*All Carriage Bolts Attach From Prisoner Side.  
Nuts and Nut Covers on D/S.**



Pic 21



Pic 20

If you have questions or need further assistance please call Technical Support: 1.877.455.6886



209 W. EASY ST., ROGERS, AR 72756 • JOTTOPUBLICSAFETY.COM • 10/24

Jotto Desk™ is a patented product and Registered Trademark of Assembled Products™ Corporation.  
Specifications subject to change without notice.

050-0092-00

